



DUCT ACCESS DOORS

STANDARD SIZES

Quantity		Size	Dim. A Width	Dim. B Height	Frame Neck O.D.	No. of Cams ADC	No. of Cams ADH	Option(s)
ADC	ADH							
		6 x 6	6	6	4-7/8" x 4-7/8"	2	1	
		8 x 8	8	8	6-7/8" x 6-7/8"	2	1	
		10 x 10	10	10	8-7/8" x 8-7/8"	2	1	
		12 x 12	12	12	10-7/8" x 10-7/8"	2	1	
		14 x 14	14	14	12-7/8" x 12-7/8"	2	1	
		16 x 16	16	16	14-7/8" x 14-7/8"	4	2	
		18 x 18	18	18	16-7/8" x 16-7/8"	4	2	
		20 x 20	20	20	18-7/8" x 18-7/8"	4	2	
		24 x 24	24	24	22-7/8" x 22-7/8"	4	2	
		24 x 36	24	36	22-7/8" x 34-7/8"	6	3	
		30 x 30	30	30	28-7/8" x 28-7/8"	8	4	
		24 x 48	24	48	22-7/8" x 46-7/8"	8	4	
		36 x 36	36	36	34-7/8" x 34-7/8"	10	5	

SPECIFICATIONS:

- DOOR PANEL: 24 ga. galvanized steel
- FRAME: 22 ga. galvanized steel
- INSULATION: 1" fiberglass
- PRE-FORMED TABS: 22 ga. galvanized steel
- CAMS & STRIKERS: galvanized steel
- HINGE: plated steel

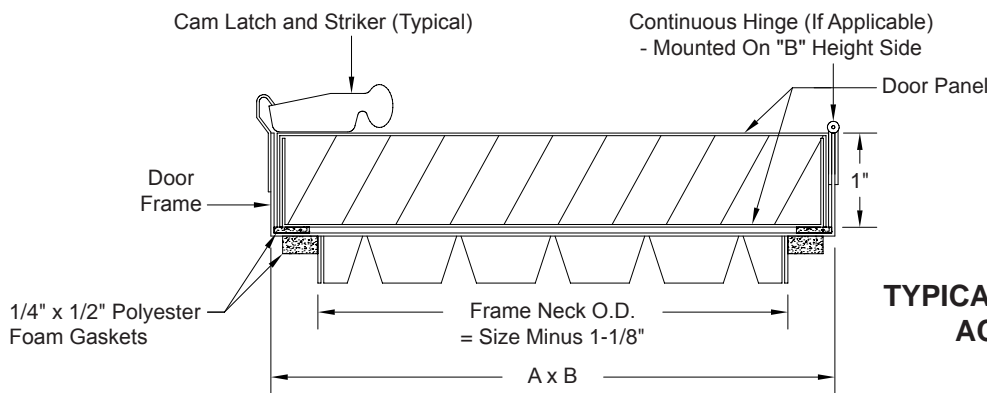
OPTIONAL CONSTRUCTION:

- .032" aluminum with aluminum hinge and/or plated steel cams & strikers
- 24 gauge stainless steel with stainless steel hinge and/or cams & strikers

OTHER OPTIONS:

- Chain (ADC only)
- Cylinder cam lock (ADH only)
- Hasp (ADH only)
- Padlock eyes (ADH only)
- Ventlock 100 handles (ADH only) shipped loose

Standard construction to 4.5" S.P.
High pressure construction available (see Model ADC-HP).



TYPICAL DOUBLE PANEL ACCESS DOOR

To maintain KEES' policy of continuous product development, we reserve the right to change prices, specifications, ratings and dimensions without notice or obligation.

Project		Location	
Engineer			
Architect		Dwg. No.	SD-ADC-H
Contractor		Date	10/14



KEES INCORPORATED
400 S. Industrial Dr.
Elkhart Lake, WI 53020
Phone: (920) 876-3391
Fax: (920) 876-3065
Website: www.kees.com