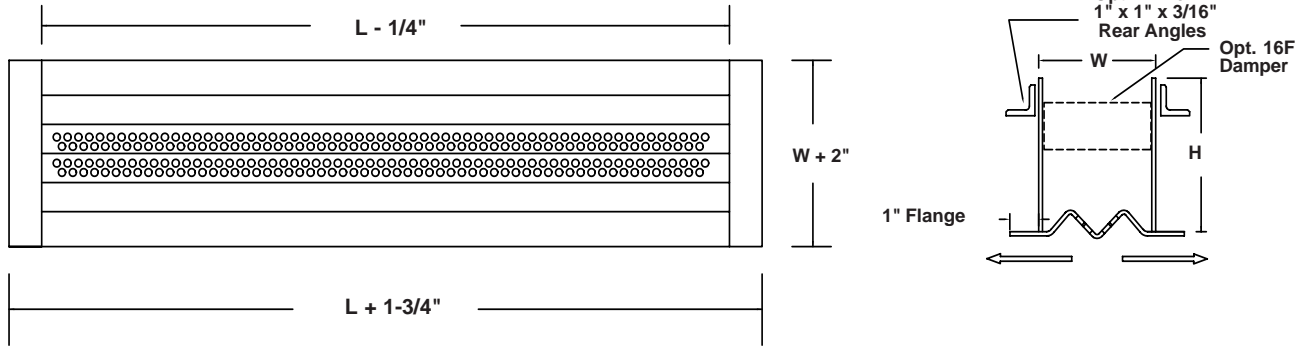


# SEG-9LS3TO SECURITY DIFFUSER

## STEEL CONSTRUCTION - TWO WAY SUPPLY

Complies with NIC recommendations and California BoP Title 24



### STANDARD CONSTRUCTION

**Face:** 10 ga. thick steel stitch welded to sleeve. 1" face flange.  
**Hole Pattern:** 3/16" diameter holes on 9/32" staggered centers.  
**Sleeve:** 10 ga. steel with continuously welded or formed seams.  
**Finish:** Two part polyurethane inside and out. White.

### REQUIRED CONSTRUCTION:

- Face Material:**  10 ga. steel (Std.)
- Hole Pattern:**  3/16" dia. holes on 9/32" centers (Std.)  
 Other \_\_\_\_\_
- Face Flange "F"**  1" (Std.)  
 Other \_\_\_\_\_
- Sleeve Material:**  10 ga. steel (Std.)  
 Other \_\_\_\_\_
- Finish:**  White (Std.)  
 Other \_\_\_\_\_
- Other Patterns:**  **SEG-9LS3VH** Vertical and horizontal  
 **SEG-9LS3H2** Two slots one way horizontal throw  
 **SEG-9LS3V2** Two slots vertical throw  
 **SEG-9LS3RS** Return and supply

### MOUNTING OPTIONS:


- 11A.** Two loose pieces of 1" x 1" x 3/16" mill finish angle loose for field welding. Length equal to longest side of diffuser. Other angle size \_\_\_\_\_
- 11B.** Rear angle frame of 1" x 1" x 3/16" mill finish steel completely assembled for field welding. Other angle size \_\_\_\_\_
- 12A.** Rear angle frame for bolting to sleeve. 1" x 1" x 3/16" steel with bolt holes 8" o.c. for 1/4" dia. bolts. No holes in sleeve. No bolts, nuts or washers. Other angle size \_\_\_\_\_
- 12B.** Rear angle frame for bolting to sleeve. 1" x 1" x 3/16" steel with bolt holes in sleeve and frame 8" o.c. for 1/4" dia. bolts. No bolts, nuts or washers. (Advise wall or ceiling thickness). Other angle size \_\_\_\_\_
- 24.** Countersunk screw holes in face 10" o.c. with #10-24 x 2" long Torx security machine screws. 1" x 1" x 1/8" steel angle frame with matching holes and foldover nuts. Requires 1-1/2" flange. Other angle size \_\_\_\_\_
- 25.** Countersunk screw holes in face 10" o.c. with #10 x 1-1/2" long Torx security sheet metal screws. Other screw length \_\_\_\_\_

### ACCESSORIES:

- 16F.** Face operated damper for total volume control.
- 16P.** Plenum mounted inlet dampers. Requires ADP plenum.
- ADP.** Supply plenums, 24 ga. galvanized steel, insulated or non-insulated. Furnished loose for field installation. 11-1/2" standard height.  
 Insulated       Non-insulated
- Other:** \_\_\_\_\_

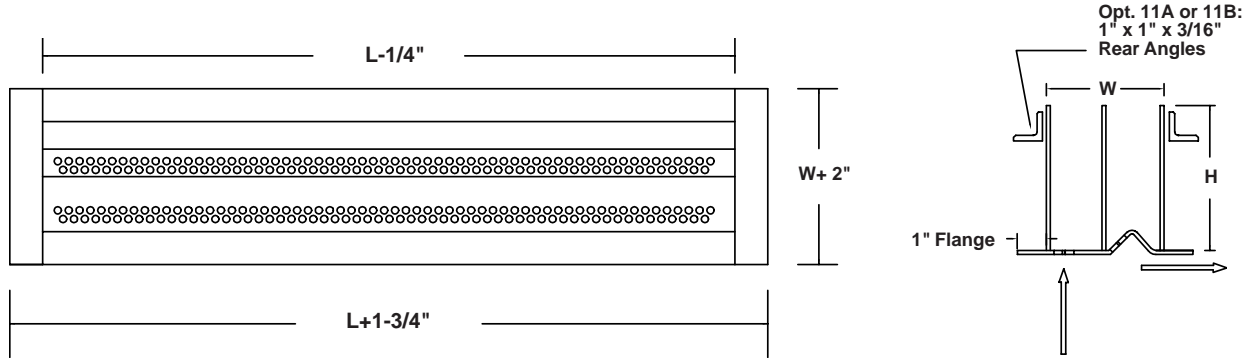
Qty.	Listed Length L	Sleeve O.D.		Ceiling Opening		Sleeve Length H	Ceiling Thickness	Accessories	Fastening Method	Tag
		L	W	L	W					
		Listed L - 1/4"	4-3/4"	Sleeve o.d. +1/4"						

To maintain KEES' policy of continuous product improvement, we reserve the right to change prices, specifications, ratings, or dimensions without prior notice or obligation.

<b>Project</b>				<b>Location</b>			
<b>Engineer</b>				<b>Dwg. No.</b>	SEG-9LS3TO 11/07/06		 <b>KEES INCORPORATED</b> 400 S. Industrial Drive P.O. Box L Elkhart Lake, WI 53020 Phone: (920) 876-3391 FAX: (920) 876-3065
<b>Architect</b>				<b>Date</b>			
<b>Contractor</b>							

# SEG-9LS3SR SECURITY DIFFUSER STEEL CONSTRUCTION - SUPPLY / RETURN

Complies with NIC recommendations and California BoP Title 24



**STANDARD CONSTRUCTION**

**Face:** 10 ga. thick steel stitch welded to sleeve. 1" face flange.  
**Hole Pattern:** 3/16" diameter holes on 9/32" staggered centers.  
**Sleeve:** 10 ga. steel with continuously welded or formed seams.  
**Divider:** 14 ga. steel, welded to sleeve.  
**Finish:** Two part polyurethane inside and out. White.

**REQUIRED CONSTRUCTION:**

- Face Material:**  10 ga. steel (Std.)
- Hole Pattern:**  3/16" dia. holes on 9/32" centers (Std.)  
 Other \_\_\_\_\_
- Face Flange "F"**  1" (Std.)  
 Other \_\_\_\_\_
- Sleeve Material:**  10 ga. steel (Std.)  
 Other \_\_\_\_\_
- Finish:**  White (Std.)  
 Other \_\_\_\_\_
- Other Material:**  **SEG-9LS3SRA**  
all 1/8" thick aluminum construction
- SEG-9LS3RSS**  
all stainless steel construction,  
12 ga. type 304.

**MOUNTING OPTIONS:**

- 11A.** Two loose pieces of 1" x 1" x 3/16" mill finish angle loose for field welding. Length equal to longest side of diffuser. Other angle size \_\_\_\_\_
- 11B.** Rear angle frame of 1" x 1" x 3/16" mill finish steel completely assembled for field welding. Other angle size \_\_\_\_\_
- 12A.** Rear angle frame for bolting to sleeve. 1" x 1" x 3/16" steel with bolt holes 8" o.c. for 1/4" dia. bolts. No holes in sleeve. No bolts, nuts or washers. Other angle size \_\_\_\_\_
- 12B.** Rear angle frame for bolting to sleeve. 1" x 1" x 3/16" steel with bolt holes in sleeve and frame 8" o.c. for 1/4" dia. bolts. No bolts, nuts or washers. (Advise wall or ceiling thickness). Other angle size \_\_\_\_\_
- 24.** Countersunk screw holes in face 10" o.c. with #10-24 x 2" long Torx security machine screws. 1" x 1" x 1/8" steel angle frame with matching holes and foldover nuts. Requires 1-1/2" flange. Other angle size \_\_\_\_\_
- 25.** Countersunk screw holes in face 10" o.c. with #10 x 1-1/2" long Torx security sheet metal screws. Other screw length \_\_\_\_\_

**ACCESSORIES:**

- 16P.** Plenum mounted inlet dampers. Requires ADP plenum.
- ADP.** Supply plenums, 24 ga. galvanized steel, insulated or non-insulated. Furnished loose for field installation. 11-1/2" standard height.
  - Insulated
  - Non-insulated
- Other:** \_\_\_\_\_

Qty.	Listed Length L	Sleeve O.D.		Ceiling Opening		Sleeve Length H	Ceiling Thick-ness	Acces-sories	Plenum Height	Plenum Inlet	Fastening Method	Tag
		L	W	L	W							
		Listed L - 1/4"	4-3/4"	Sleeve o.d. +1/4"								

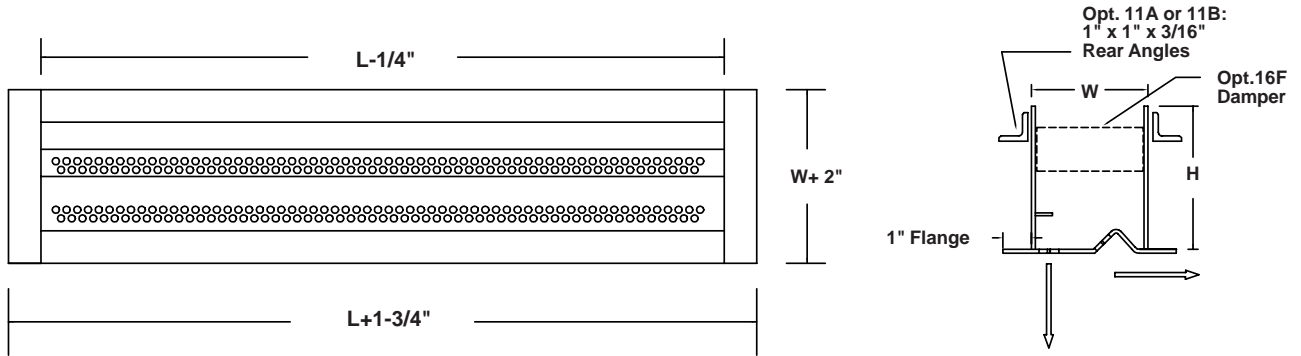
To maintain KEES' policy of continuous product improvement, we reserve the right to change prices, specifications, ratings, or dimensions without prior notice or obligation.

<b>Project</b>		<b>Location</b>		
<b>Engineer</b>				
<b>Architect</b>		<b>Dwg. No.</b>	SEG-9LS3SR 11/07/06	<p><b>KEES INCORPORATED</b>  400 S. Industrial Drive  P.O. Box L  Elkhart Lake, WI 53020  Phone: (920) 876-3391  FAX: (920) 876-3065</p>
<b>Contractor</b>		<b>Date</b>		

# SEG-9LS3VH SECURITY DIFFUSER

## STEEL CONSTRUCTION - SUPPLY VERTICAL/HORIZONTAL

Complies with NIC recommendations and California BoP Title 24



**STANDARD CONSTRUCTION**

**Face:** 10 ga. thick steel stitch welded to sleeve. 1" face flange.  
**Hole Pattern:** 3/16" diameter holes on 9/32" staggered centers.  
**Sleeve:** 10 ga. steel with continuously welded or formed seams.  
**Finish:** Two part polyurethane inside and out. White.

**REQUIRED CONSTRUCTION:**

- Face Material:**  10 ga. steel (Std.)
- Hole Pattern:**  3/16" dia. holes on 9/32" centers (Std.)  
 Other \_\_\_\_\_
- Face Flange "F"**  1" (Std.)  
 Other \_\_\_\_\_
- Sleeve Material:**  10 ga. steel (Std.)  
 Other \_\_\_\_\_
- Finish:**  White (Std.)  
 Other \_\_\_\_\_
- Other Material:**  **SEG-9LS3VHA**  
all 1/8" thick aluminum construction
- SEG-9LS3VHSS**  
all stainless steel construction,  
12 ga. type 304.

**MOUNTING OPTIONS:**

- 11A.** Two loose pieces of 1" x 1" x 3/16" mill finish angle loose for field welding. Length equal to longest side of diffuser. Other angle size \_\_\_\_\_
- 11B.** Rear angle frame of 1" x 1" x 3/16" mill finish steel completely assembled for field welding. Other angle size \_\_\_\_\_
- 12A.** Rear angle frame for bolting to sleeve. 1" x 1" x 3/16" steel with bolt holes 8" o.c. for 1/4" dia. bolts. No holes in sleeve. No bolts, nuts or washers. Other angle size \_\_\_\_\_
- 12B.** Rear angle frame for bolting to sleeve. 1" x 1" x 3/16" steel with bolt holes in sleeve and frame 8" o.c. for 1/4" dia. bolts. No bolts, nuts or washers. (Advise wall or ceiling thickness). Other angle size \_\_\_\_\_
- 24.** Countersunk screw holes in face 10" o.c. with #10-24 x 2" long Torx security machine screws. 1" x 1" x 1/8" steel angle frame with matching holes and foldover nuts. Requires 1-1/2" flange. Other angle size \_\_\_\_\_
- 25.** Countersunk screw holes in face 10" o.c. with #10 x 1-1/2" long Torx security sheet metal screws. Other screw length \_\_\_\_\_

**ACCESSORIES:**

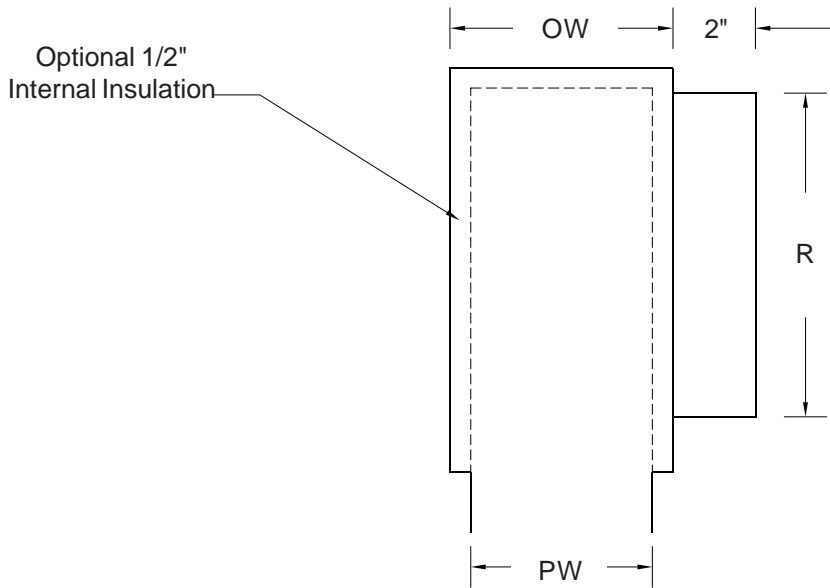
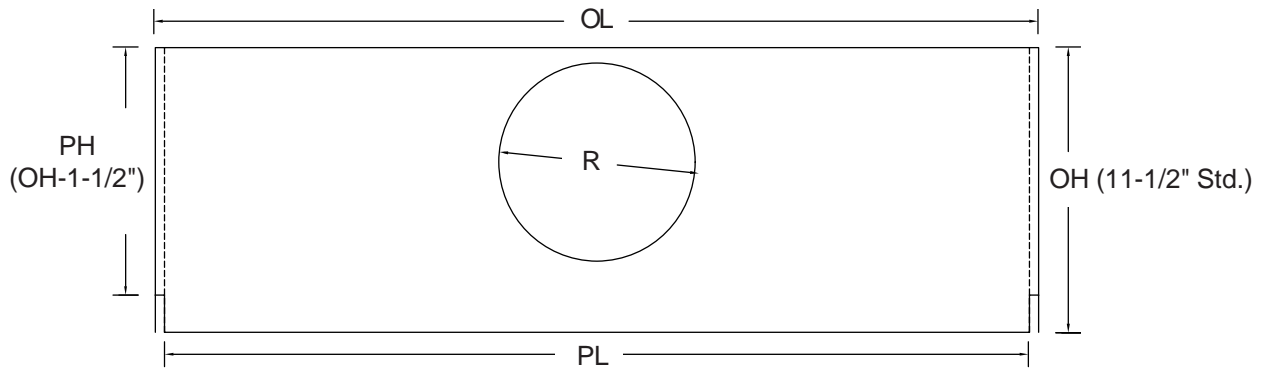
- 16F.** Face operated damper for total volume control.
- 16P.** Plenum mounted inlet dampers. Requires ADP plenum.
- ADP.** Supply plenums, 24 ga. galvanized steel, insulated or non-insulated. Furnished loose for field installation. 11-1/2" standard height.  
 Insulated                       Non-insulated
- Other:** \_\_\_\_\_

Qty.	Listed Length L	Sleeve O.D.		Ceiling Opening		Sleeve Length H	Ceiling Thickness	Accessories	Plenum Height	Plenum Inlet	Fastening Method	Tag
		L	W	L	W							
		Listed L - 1/4"	4-3/4"	Sleeve o.d. +1/4"								

To maintain KEES' policy of continuous product improvement, we reserve the right to change prices, specifications, ratings, or dimensions without prior notice or obligation.

<b>Project</b>		<b>Location</b>	
<b>Engineer</b>			<p><b>KEES INCORPORATED</b>  400 S. Industrial Drive  P.O. Box L  Elkhart Lake, WI 53020  Phone: (920) 876-3391  FAX: (920) 876-3065</p>
<b>Architect</b>		<b>Dwg. No.</b> SEG-9LS3VH 11/07/06	
<b>Contractor</b>		<b>Date</b>	

**ADP PLENUM  
FOR USE WITH  
SEG-9LS3 SECURITY DIFFUSER  
TWO WAY THROW PATTERN**



Note 1) Collars offset on 48" lengths  
2) Inlets 10" and larger will be oval

24 ga. galvanized steel construction.

Qty.	Diffuser Listed Length	Plenum Length		Plenum Height		Plenum Inlet R	Plenum Width		Internal Insulation		Tag
		OL	PL	OH	PH		OW	PW	Yes	No	
	24"	23-7/8"	23-3/8"				5-3/8"	4-3/8"			
	36"	35-7/8"	35-3/8"				5-3/8"	4-3/8"			
	48"	47-7/8"	47-3/8"				5-3/8"	4-3/8"			

To maintain KEES' policy of continuous product improvement, we reserve the right to change prices, specifications, ratings, or dimensions without prior notice or obligation.

<b>Project</b>		<b>Location</b>	
<b>Engineer</b>			 <b>KEES INCORPORATED</b> 400 S. Industrial Drive P.O. Box L Elkhart Lake, WI 53020 Phone: (920) 876-3391 FAX: (920) 876-3065
<b>Architect</b>		<b>Dwg. No.</b> SEG-9LSADP 11/07/06	
<b>Contractor</b>		<b>Date</b>	