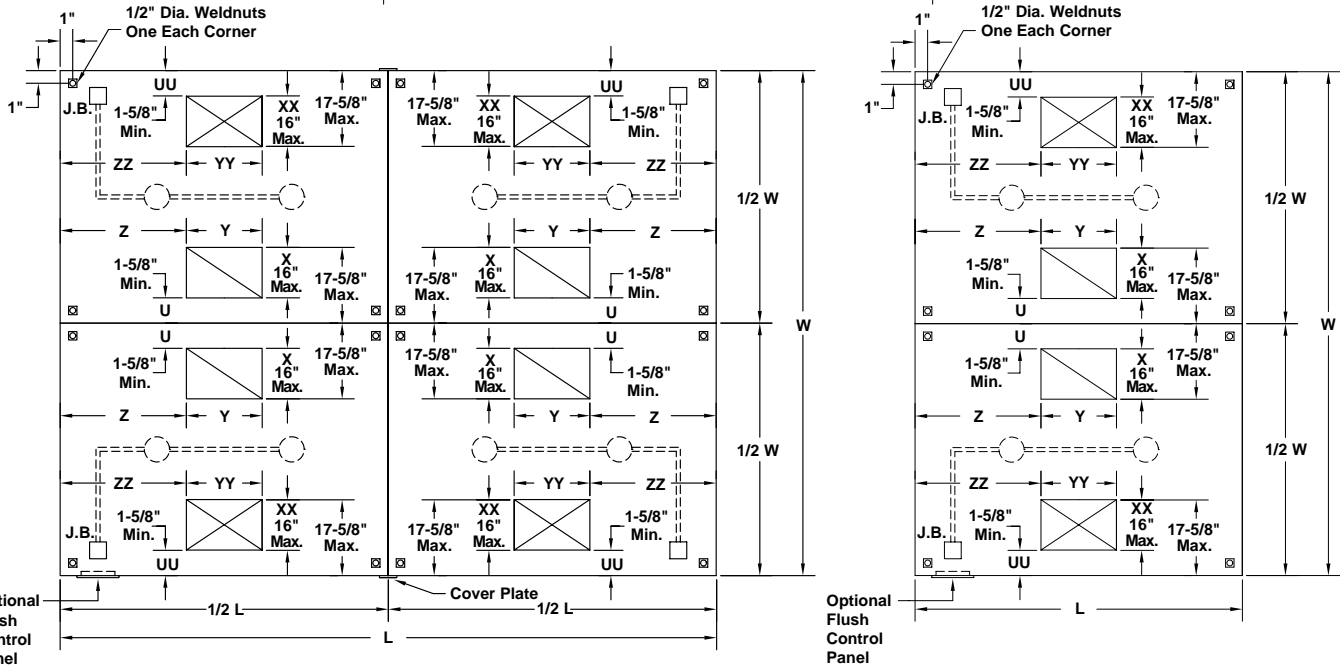
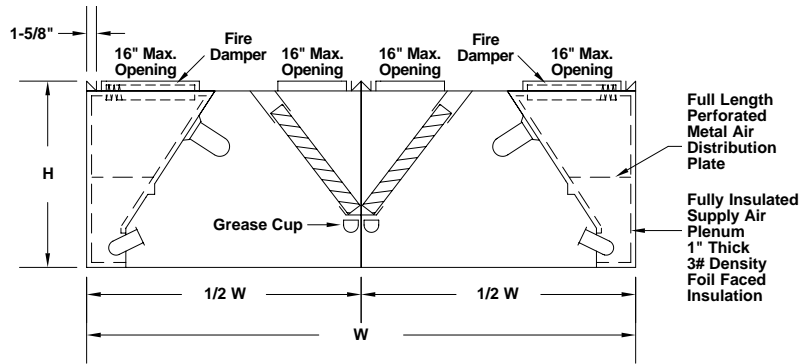


# MODEL KSI-100 DOUBLE ISLAND



Quantity	① Material	② Gauge	Hood Dimensions			③ Number of Lights	④ Factory Cut Exhaust Opening						
			L	W	H		U	X	Y	Z			

④ Factory Cut Supply Opening				⑤ Filters				⑥ Finish	Other Options	Tag
UU	XX	YY	ZZ	Type	Material	Quantity	Size			

- ① Type 304 stainless steel.
- ② 18 ga. standard; other gauges available.
- ③ Standard is 100 watt vaporproof incandescent U.L. Listed for use on grease exhaust hood.
- ④ 2 sets of collars required on hood sections over 12' long.
- ⑤ Aluminum baffle type U.L. Classified filters standard.
- ⑥ #3 polish standard.
- ⑦ Optional exhaust air fire damper.
- ⑧ Standard supply air fire damper.
- ⑨ Optional supply air collar balancing damper.
- ⑩ Optional switch package with flush mounted stainless steel cover and junction box on top of hood. (Fan switch with illuminated toggle).
  - Hood mounted  Loose for wall mounting
  - Number of light switches \_\_\_\_
  - Number of fan switches \_\_\_\_ Voltage \_\_\_\_ 115V \_\_\_\_ 24V

**UL** US LISTED  U.L. File MH12960 (Without Exhaust Fire Damper)  U.L. File MH12071 (With Exhaust Fire Damper)



<b>Project</b>				<b>Location</b>			
<b>Engineer</b>				<b>Dwg No.</b>	SD-KSI-100-DI		
<b>Architect</b>				<b>Date</b>	05-02		
<b>Contractor</b>				<b>KEES INCORPORATED</b> 400 S. Industrial Dr. P.O. Box L Elkhart Lake, WI 53020 Phone: (920) 876-3391 Fax: (920) 876-3065 Website: www.kees.com			