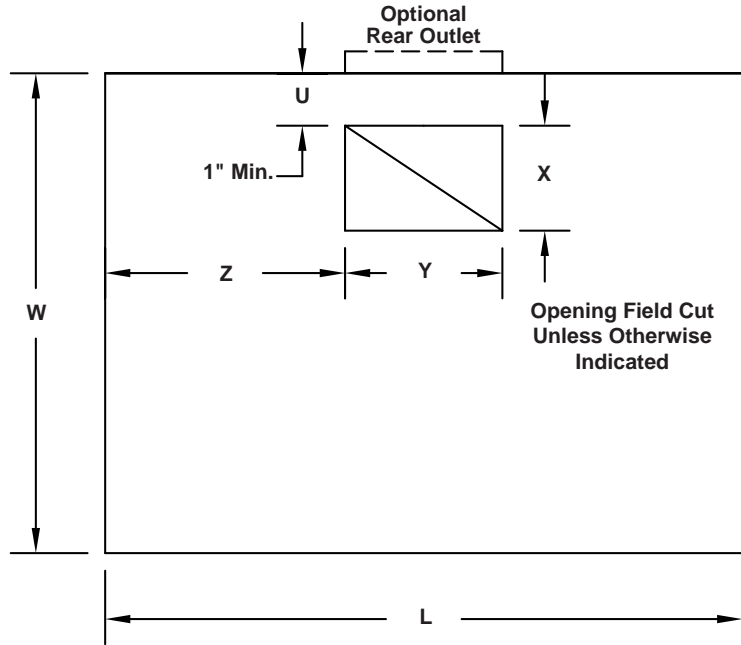
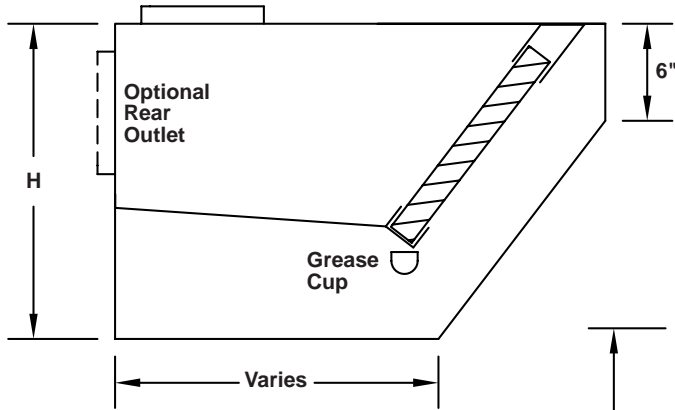


MODEL KE



Type of Bottom Edge on All Sides



| Quantity | ① Material | ② Material Gauge | Hood Dimensions | | | ③ Factory Cut Opening | | | |
|----------|------------|------------------|-----------------|---|---|-----------------------|---|---|---|
| | | | L | W | H | U | X | Y | Z |
| | | | | | | | | | |
| | | | | | | | | | |
| | | | | | | | | | |
| | | | | | | | | | |


| ④ Filters | | | | ⑤ Finish | Other Options | Tag |
|-----------|----------|----------|------|----------|---------------|-----|
| Type | Material | Quantity | Size | | | |
| | | | | | | |
| | | | | | | |
| | | | | | | |
| | | | | | | |

- ① Type 304 stainless steel.
- ② 18 ga. is standard; other gauges available.
- ③ Includes 1 inch high collar welded on.
- ④ Aluminum baffle type U.L. Classified filters standard.

- ⑤ #3 polish standard.
- ⑥ Optional switch package with flush mounted stainless steel cover and junction box on top of hood. (Fan switch with illuminated toggle).
 - Hood mounted Loose for wall mounting
 - Number of fan switches _____ Voltage _____ 115V _____ 24V



To maintain KEES' policy of continuous product improvement, we reserve the right to change prices, specifications, ratings or dimensions without notice or obligation.

| | | | | |
|-------------------|--|-----------------|--------------|--|
| Project | | Location | |  KEES INCORPORATED 400 S. Industrial Dr. • P.O. Box L Elkhart Lake, WI 53020 Phone: (920) 876-3391 Fax: (920) 876-3065 Website: www.kees.com |
| Engineer | | Dwg. No. | SD-KE | |
| Architect | | Date | 08/09 | |
| Contractor | | | | |