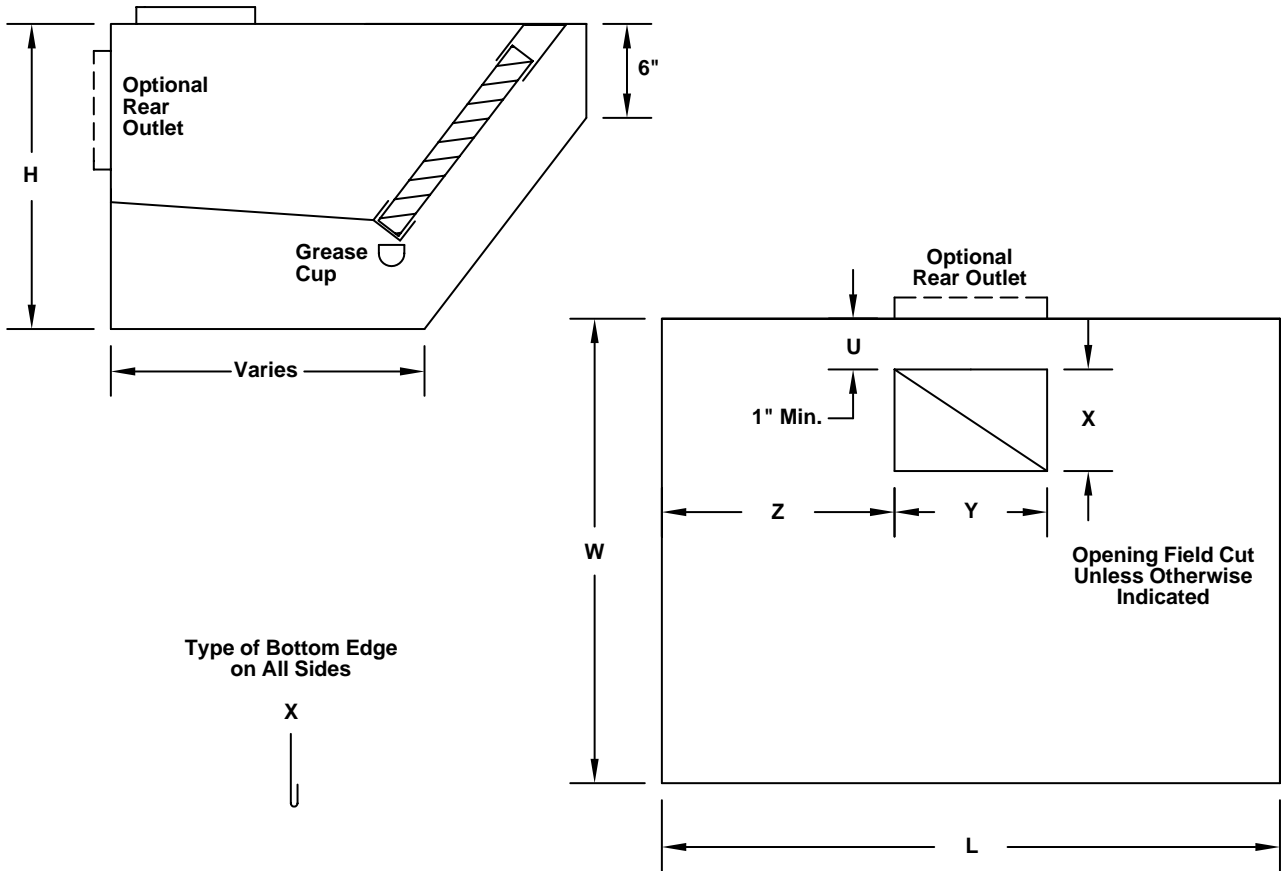


MODEL KE



Quantity	① Material	② Material Gauge	Hood Dimensions			③ Factory Cut Opening			
			L	W	H	U	X	Y	Z

④ Filters				⑤ Finish	Other Options	Tag
Type	Material	Qty.	Size			

- ① Type 304 stainless steel.
- ② 18 ga. is standard; other gauges available.
- ③ Includes 1 inch high collar welded on.
- ④ Standard are aluminum extractor type; other types available.
- ⑤ #3 polish standard.
- ⑥ Optional switch package with flush mounted stainless steel cover and junction box on top of hood. (Fan switch with illuminated toggle).
 - Hood mounted Loose for wall mounting
 - Number of fan switches ____ Voltage ____ 115V ____ 24V



To maintain KEES' policy of continuous product improvement, we reserve the right to change prices, specifications, ratings or dimensions without notice or obligation.

Project			Location			
Engineer			KEES INCORPORATED 400 S. Industrial Dr. □ P.O. Box L Elkhart Lake, WI 53020 Phone: (920) 876-3391 Fax: (920) 876-3065 Website: www.kees.com			
Architect		Dwg. No.				SD-KE
Contractor		Date				4-00