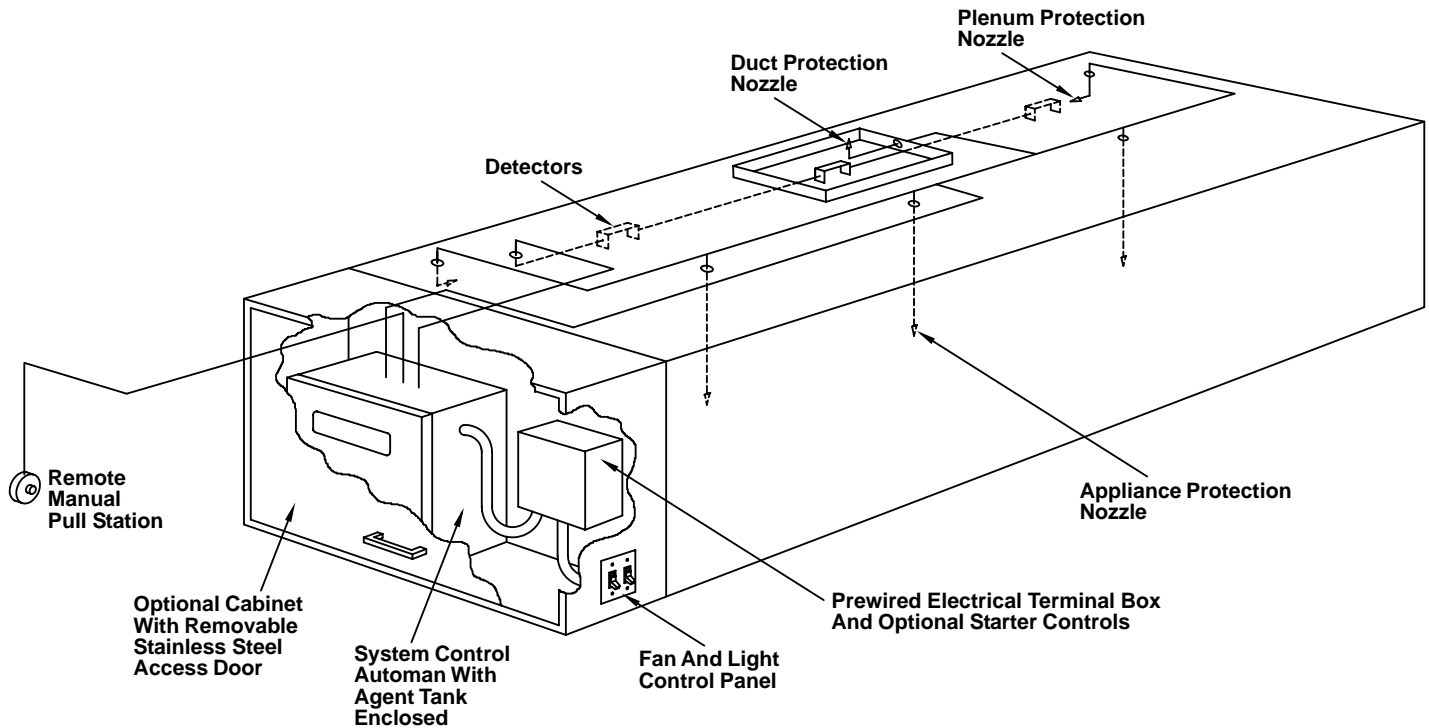


KEES FIRE SUPPRESSION SYSTEM

UTILIZING THE ANSUL® R-102 LIQUID SYSTEM


ANSUL® PIRANHA™
Fire Suppression
Systems Also
Available



System Components

- ANSUL Automan Regulated Release Mechanism - actuates system and shuts down cooking equipment fuel supply and supply fan.
- Agent Tank - R-102 Tank contains liquid fire suppression agent.
- Detection System - consists of fusible links selected for the application and hardware to connect them to the regulated release mechanism.
- Discharge Nozzles - chosen and placed in the hood according to the application, they direct the fire suppression agent to the plenum, exhaust duct and cooking equipment.
- Fuel & Equipment Shutoff Devices - mechanical or electrical solenoid gas valve and double pole, double throw microswitch.
- Remote Pull Station - allows for manual actuation of the system and is located at the exit point of the kitchen.
- Optional Self-Contained System - cabinet constructed of the hood material is attached to either side of the hood as specified. It is depicted above with the included and the optional components shown inside.

To maintain KEES' policy of continuous product improvement, we reserve the right to change prices, specifications, ratings or dimensions without notice or obligation.

Project		Location		
Engineer			 KEES INCORPORATED 400 S. Industrial Dr. □ P.O. Box L Elkhart Lake, WI 53020 Phone: (920) 876-3391 Fax: (920) 876-3065 Website: www.kees.com	
Architect		Dwg. No.		SD-FSS
Contractor		Date		2-03