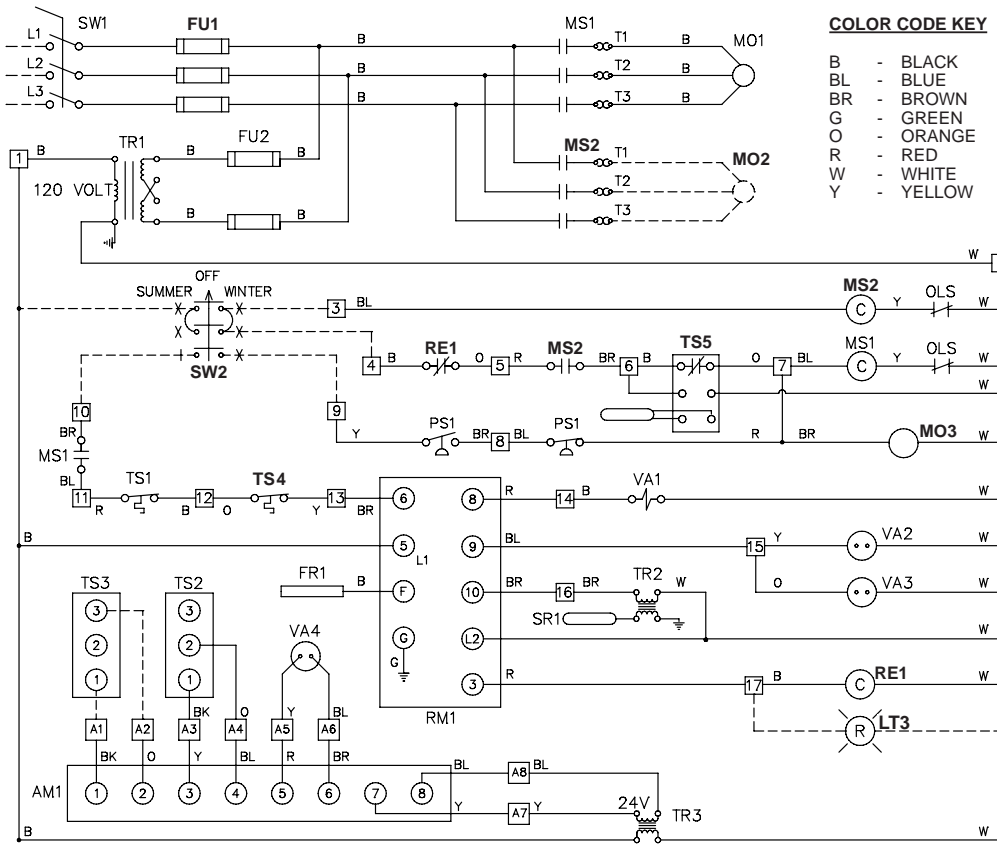


Model DFG Wiring Diagram



COLOR CODE KEY

- B - BLACK
- BL - BLUE
- BR - BROWN
- G - GREEN
- O - ORANGE
- R - RED
- W - WHITE
- Y - YELLOW

COMPONENT IDENTIFICATION

- AM1 - AMPLIFIER
- FR1 - FLAME ROD
- ** FU1 - MAIN FUSES
- FU2 - CONTROL FUSE(S)
- ** LT1 - BLOWER RUN LIGHT
- ** LT2 - MAIN VALVE LIGHT
- ** LT3 - FLAME FAILURE LIGHT
- ** LT4 - LOW TEMPERATURE LIGHT
- ** LT5 - CLOGGED FILTER LIGHT
- MO1 - SUPPLY FAN MOTOR
- MO2 - EXHAUST FAN MOTOR
- ** MO3 - DAMPER MOTOR
- MS1 - SUPPLY FAN STARTER
- ** MS2 - EXHAUST FAN STARTER
- PS1 - AIR FLOW SWITCH
- ** PS2 - CLOGGED FILTER SWITCH
- ** PS3 - LOW GAS PRESSURE SWITCH
- ** PS4 - HIGH GAS PRESSURE SWITCH
- ** RE1 - FLAME FAILURE RELAY
- RM1 - BURNER CONTROL MODULE
- SR1 - SPARK ROD
- SW1 - MAIN DISCONNECT
- ** SW2 - "SUMMER-OFF-WINTER" SWITCH
- TR1 - CONTROL TRANSFORMER
- TR2 - IGNITION TRANSFORMER
- TR3 - LOW VOLTAGE TRANSFORMER
- TS1 - HIGH TEMP. LIMIT SWITCH
- TS2 - DISCHARGE TEMP. SENSOR
- TS3 - REMOTE TEMPERATURE SELECTOR
- ** TS4 - MILD WEATHER THERMOSTAT
- ** TS5 - LOW TEMP. LIMIT SWITCH
- VA1 - PILOT SOLENOID VALVE
- VA2 - MAIN SOLENOID VALVE
- VA3 - SECOND SOLENOID VALVE
- VA4 - MODULATING VALVE
- ** VA5 - N/O VENT VALVE

NOTES:

- DENOTES FIELD WIRING
- ** - OPTIONAL COMPONENT - ALSO SHOWN IN BOLD TYPE
- 6 □ TYPICAL TERMINAL BLOCK

NOT ALL OPTIONAL COMPONENTS SHOWN ON THIS DRAWING



KEES INCORPORATED
400 S. Industrial Dr.
Elkhart Lake, WI 53020

Phone: (920) 876-3391
Fax: (920) 876-3065
Website: www.kees.com