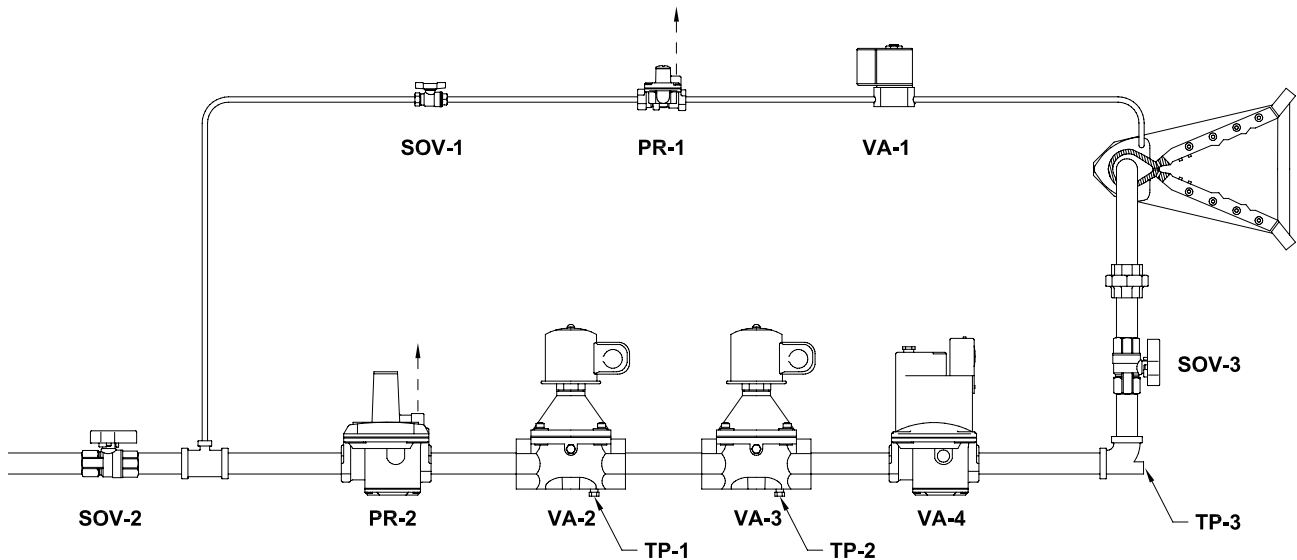


Model DFG Standard Manifold

MEETS ETL / ANSI / FM / IRI REQUIREMENTS



FM and IRI are insurance providers that typically cover factories, schools and other commercial buildings. Often they have specific construction requirements for equipment in the building to ensure that it is safe. These requirements must be met before they will agree to insure.

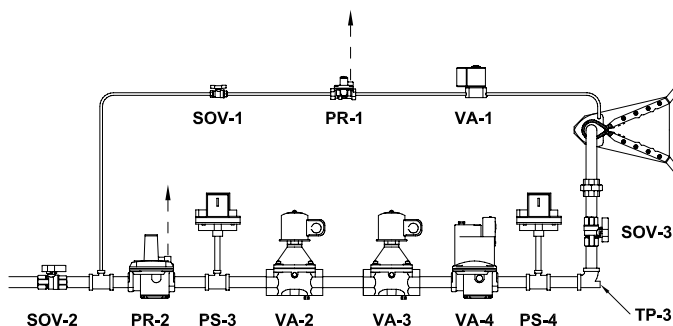
Both FM and IRI have agreed to accept our standard ETL rated units without any modifications. If a specification calls for either FM or IRI approved construction then our standard unit meets that specification.

ITEM

DESCRIPTION

PR-1	Pilot Gas Pressure Regulator
PR-2	Main Gas Pressure Regulator
PS-3	Low Gas Pressure Switch
PS-4	High Gas Pressure Switch
SOV-1	Pilot Gas Manual Shut-off Valve
SOV-2	Main Gas Manual Shut-off Valve
SOV-3	Leak Test Manual Shut-off Valve
TP-1	Plugged Test Port
TP-2	Plugged Test Port
TP-3	Plugged Test Port
VA-1	Pilot Solenoid Valve
VA-2	Main Solenoid Valve
VA-3	Second Solenoid Valve
VA-4	Modulating Valve

STANDARD MANIFOLD WITH OPTIONAL COMPONENTS



NOTES:

1. PR-2 and VA-4 are combined into a single component on units with input > 825 MBH.
2. PS-3 and PS-4 are available as optional components.
3. SOV-2 ships loose for field installation on the outside of the unit.
4. PR-1 and PR-2 vent to the inside of the control compartment. Any vents to the outside are provided by others.



KEES INCORPORATED
400 S. Industrial Dr.
Elkhart Lake, WI 53020

Phone: (920) 876-3391
Fax: (920) 876-3065
Website: www.kees.com