

FIRE RATED ACCESS DOORS

1 OR 3 HOUR FIRE-RATED ACCESS PANEL

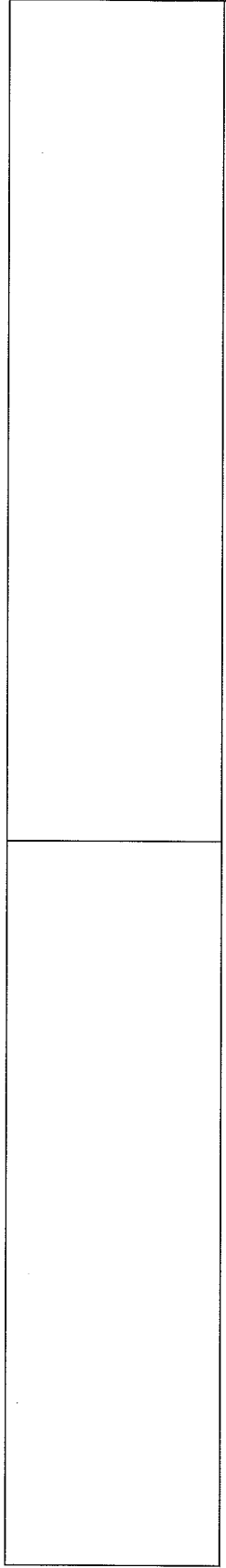
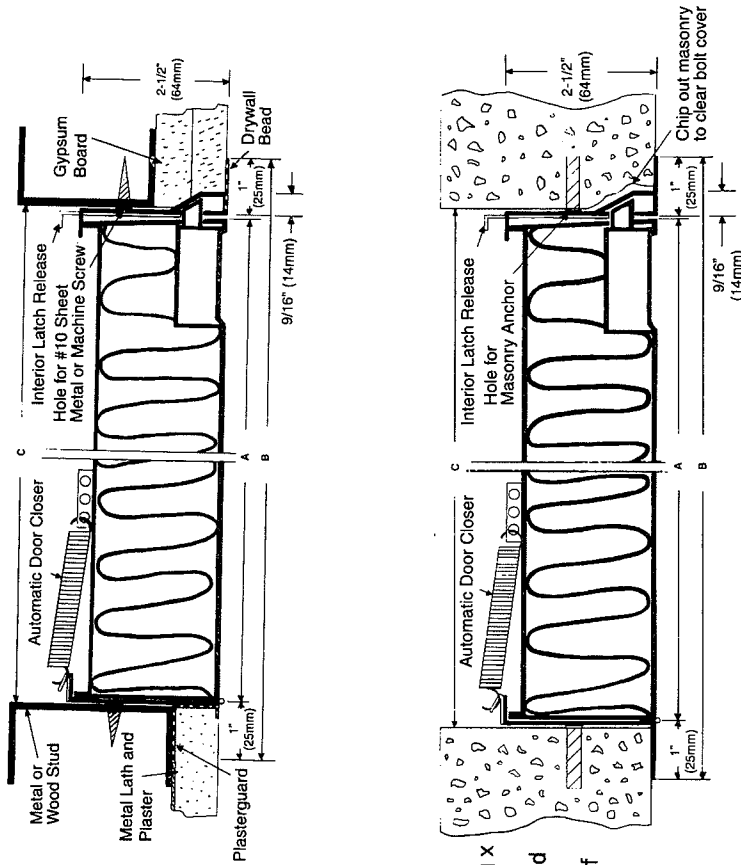
WALL INSTALLATION INSTRUCTIONS

GYPSUM BOARD OR PLASTER WALLS

1. With metal or wood studding, install a framed opening at specified location. Open dimensions should be 3/8" larger than door size of panel; i.e., for a 12" x 12" panel, opening should be 12-3/8" x 12-3/8".
2. Frame above and below access panel.
3. On panels larger than 16" x 16", install a double stud on both sides in the same manner as at passage panels.
4. Place panel in position in opening and mark location of attachments on studding using holes in latch and hinge sides of panel frame as marking guide.
5. Remove panel and drill 5/32" holes through studs at marked points. Four attachment holes for panels 32" x 32" and smaller; six attachment holes for larger panels.
6. Place panel in position (leaving masonry anchors flat against panel frame) and attach with #10 sheet metal or machine screws.
7. Check panel for freedom of movement. If it binds, shim as necessary to remove any racking of frame at attachments to studding.

MASONRY WALLS

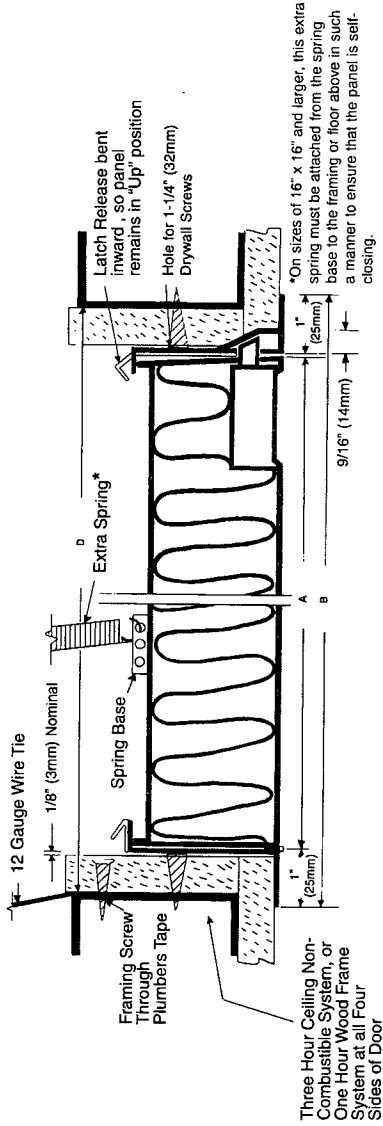
1. Opening should be planned to dimensions 3/8" larger than door size of panel; i.e., for a 12" x 12" panel, opening should be 12-3/8" x 12-3/8". (A notched-out area 2-1/4" long x 7/8" wide and 1/2" deep is required for the lock bolt cover.)
2. If wall is under construction at time panel is being installed, masonry anchors (unfolded from frame) will serve for attachment.
3. If wall is already in place, position panel in opening provided for it and mark location of attachments on wall using holes in latch and hinge sides of panel frame as marking guides.
4. Remove panel and install expansion shields in wall at marked points. Four for panels 32" x 32" or smaller, six for larger panels.
5. Place panel in position (leaving masonry anchors flat against frame) and attach with #10-32 x 1" long flat head steel machine screws or equivalent.
6. Check panel for freedom of movement. If it binds, shim as necessary to remove any racking of frame at attachments to masonry.
7. Use mortar between frame of panel and block wall to provide a complete closure around frame of panel.



FIRE RATED ACCESS DOORS

1 OR 3 HOUR FIRE-RATED ACCESS PANEL

CEILING INSTALLATION INSTRUCTIONS



1. With metal studding, install a framed opening at specified location of panel. Opening dimensions should be 1-5/8" larger than door size of panel; i.e., for a 16" x 16" panel, opening should be 17-5/8" x 17-5/8".
 2. The interior of opening should be lined with 5/8" type "X" gypsum board, using screws spaced 18" o.c. maximum to the 1-5/8" track. Minimum of two (2) screws per side.
 3. Remove automatic door closer (spring).
 4. Place panel in position in opening and mark location of attaching screws on studding, using holes in latch and hinge sides of panel frame as marking guides.
 5. Remove panel and drill 5/32" holes through studding at points marked for attachment holes.
 6. Place panel in position (leaving masonry anchor straps flat against panel frame) and attach with #10 drywall screws.
 7. Panel can be supported with 12 gauge wire ties or plumbers tape attached from framing screw to wood studs of flooring above.
 8. Check panel for freedom of movement. If binding occurs, shim as necessary to prevent racking of frame.
 9. Reattach automatic door closer (spring), and secure to framing above.
- IMPORTANT**
10. Panel sizes 16" x 16" and larger are supplied with an extra spring. It is the responsibility of the installer to attach these springs from the spring base on back of panel to framing of floor above to insure that door is self-closing.
 11. Before installing panel, bend 'lock release' bracket inward causing panel to stay in 'up' position.
 12. In order to insure that panel is self-closing, it must be released from at least 60 degrees from horizontal.

NOTE: ALL FIRE-RATED ACCESS PANELS ARE SELF-CLOSING.

THIS PRODUCT NOT CLASSIFIED BY UNDERWRITER'S LABORATORIES FOR THIS APPLICATION

