



# WEATHER RESISTANT ACCESS DOORS MODEL WR

## STANDARD SIZES

Qty.	Size A x B	Wall Opening W x H	No. of Handles	Handle Type HL or H	Option(s)
	12" x 12"	12-3/8" x 12-3/8"	1		
	14" x 14"	14-3/8" x 14-3/8"	1		
	18" x 18"	18-3/8" x 18-3/8"	1		
	20" x 24"	20-3/8" x 24-3/8"	1		
	20" x 30"	20-3/8" x 30-3/8"	1		
	22" x 30"	22-3/8" x 30-3/8"	1		
	22" x 36"	22-3/8" x 36-3/8"	2		
	24" x 24"	24-3/8" x 24-3/8"	2		
	24" x 30"	24-3/8" x 30-3/8"	2		
	24" x 36"	24-3/8" x 36-3/8"	2		
	24" x 48"	24-3/8" x 48-3/8"	2		
	30" x 30"	30-3/8" x 30-3/8"	2		
	30" x 36"	30-3/8" x 36-3/8"	2		
	36" x 36"	36-3/8" x 36-3/8"	2		
	36" x 48"	36-3/8" x 48-3/8"	4		
	48" x 48"	48-3/8" x 48-3/8"	4		

### SPECIFICATIONS:

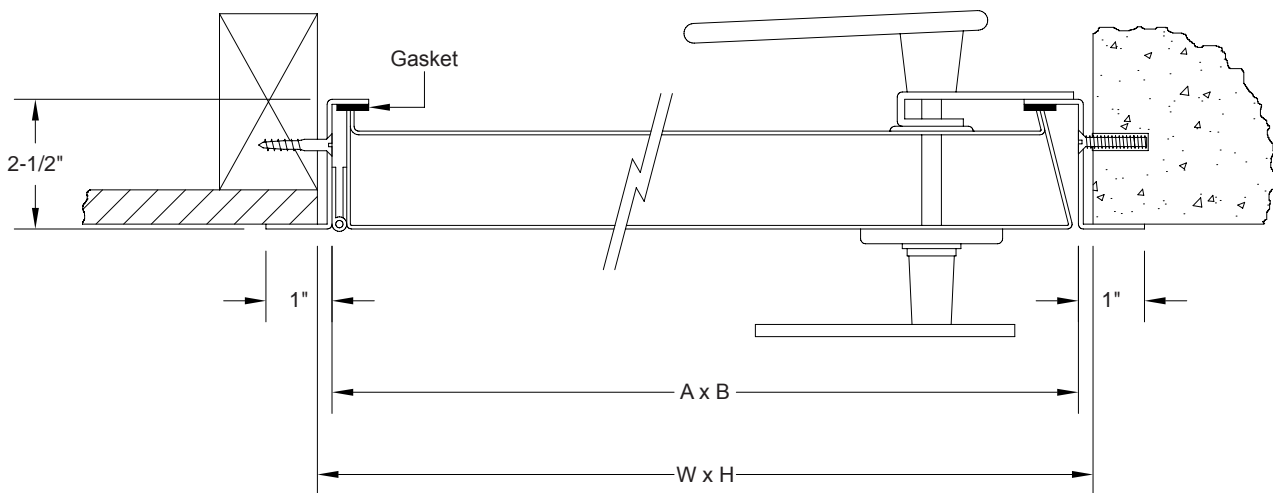
- DOOR PANEL:  
.040" aluminum
- FRAME:  
16 ga. galvanized steel
- INSULATION:  
2" fiberglass
- HINGE:  
Stainless steel
- GASKET:  
EPDM foam rubber bulb
- FINISH:  
Primer
- LATCH:  
Non-locking (H) handle

### OPTIONAL CONSTRUCTION:

- 16 ga. 304 stainless steel frame and 20 ga. stainless steel door, #4 satin polish

### OTHER OPTIONS:

- Locking (HL) die cast zinc with non-locking inside handle



To maintain KEES' policy of continuous product development, we reserve the right to change prices, specifications, ratings and dimensions without notice or obligation.

<b>Project</b>		<b>Location</b>	
<b>Engineer</b>			
<b>Architect</b>		<b>Dwg. No.</b>	<b>SD-WR</b>
<b>Contractor</b>		<b>Date</b>	<b>04/14</b>



**KEES INCORPORATED**  
400 S. Industrial Dr.  
Elkhart Lake, WI 53020  
Phone: (920) 876-3391  
Fax: (920) 876-3065  
Website: www.kees.com