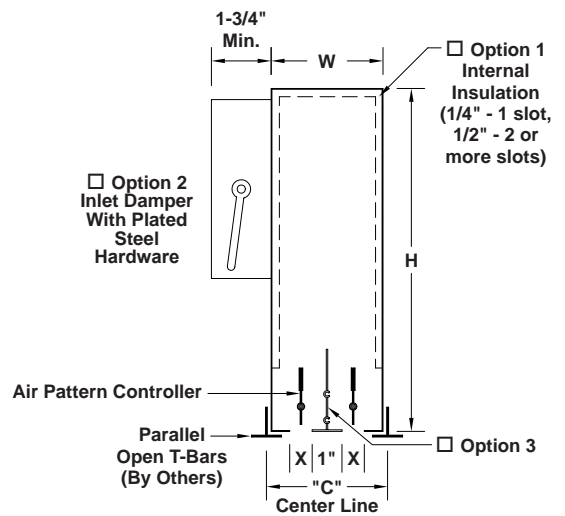
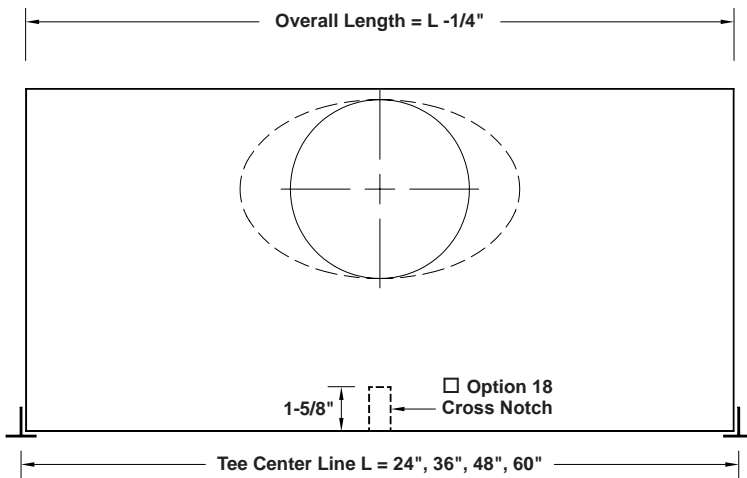


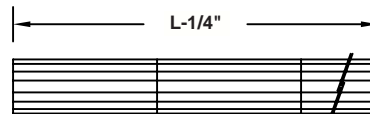
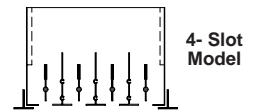
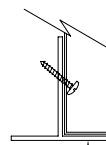
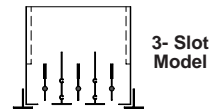
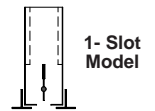
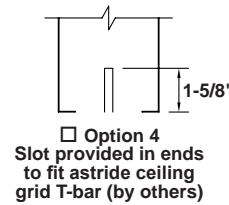
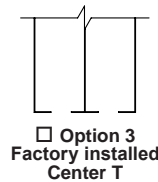
# MODEL "K" STAINLESS STEEL DIFFUSER WITH ADJUSTABLE BLADE

## 2-Slot Model



MODEL	SLOT WIDTH X	W	C	H
K-75-1	3/4"	1-7/8"	2-1/8"	11-5/8"
K-100-1	1"	2-1/8"	2-3/8"	
K-150-1	1-1/2"	2-5/8"	2-7/8"	
K-75-2	3/4"	3-5/8"	3-7/8"	
K-100-2	1"	4-1/8"	4-3/8"	
K-150-2	1-1/2"	5-1/8"	5-3/8"	
K-75-3	3/4"	5-3/8"	5-5/8"	
K-100-3	1"	6-1/8"	6-3/8"	
K-150-3	1-1/2"	7-5/8"	7-7/8"	
K-75-4	3/4"	7-1/8"	7-3/8"	
K-100-4	1"	8-1/8"	8-3/8"	
K-150-4	1-1/2"	10-1/8"	10-3/8"	

### ACCESSORY OPTIONS



**Material:** 304 stainless steel.  
**Finish:** #3 satin polish where visible.

Continuous run of active and/or inactive sections. Center tees extended to end of plenum to appear continuous. Ceiling tee bars by others or option 12 frame required.

Qty.	Model	Length L	Height H	Inlet Size	Optional		Options	Tag
					Frame	Screw Holes		
						Field Drilled		

To maintain KEES' policy of continuous product development, we reserve the right to change prices, specifications, ratings and dimensions without notice or obligation.

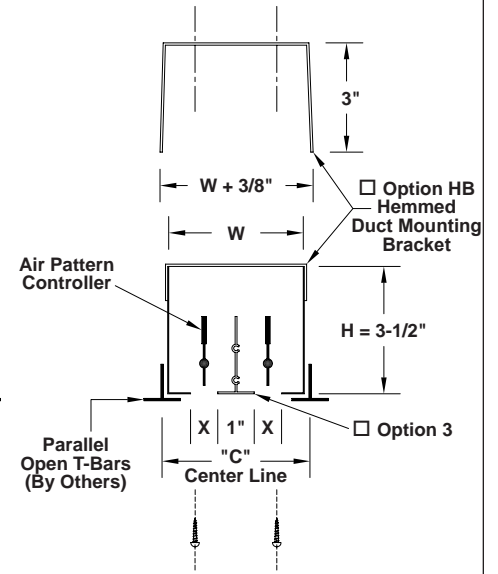
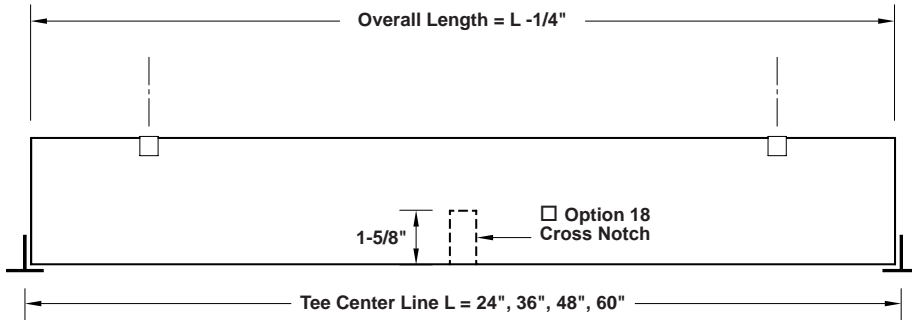
<b>Project</b>		<b>Location</b>	
<b>Engineer</b>			
<b>Architect</b>		<b>Dwg. No.</b>	<b>Diff. KS-SS</b>
<b>Contractor</b>		<b>Date</b>	01/13



**KEES INCORPORATED**  
 400 S. Industrial Dr.  
 Elkhart Lake, WI 53020  
 Phone: (920) 876-3391  
 Fax: (920) 876-3065  
 Website: www.kees.com

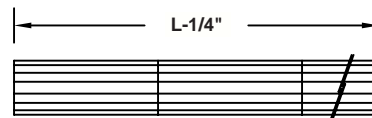
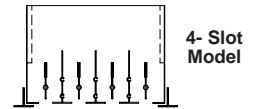
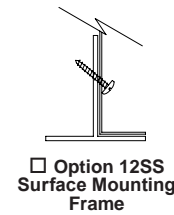
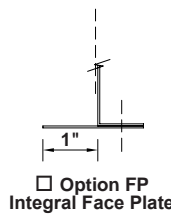
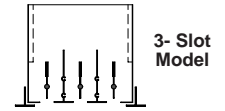
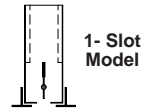
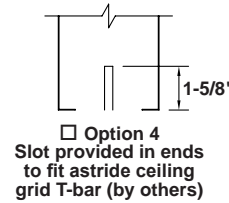
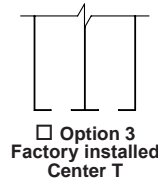
# MODEL "K" STAINLESS STEEL DIFFUSER WITH ADJUSTABLE BLADE

## 2-Slot Model



MODEL	SLOT WIDTH X	W	C	H
K-75-1	3/4"	1-7/8"	2-1/8"	3-1/2"
K-100-1	1"	2-1/8"	2-3/8"	
K-150-1	1-1/2"	2-5/8"	2-7/8"	
K-75-2	3/4"	3-5/8"	3-7/8"	
K-100-2	1"	4-1/8"	4-3/8"	
K-150-2	1-1/2"	5-1/8"	5-3/8"	
K-75-3	3/4"	5-3/8"	5-5/8"	
K-100-3	1"	6-1/8"	6-3/8"	
K-150-3	1-1/2"	7-5/8"	7-7/8"	
K-75-4	3/4"	7-1/8"	7-3/8"	
K-100-4	1"	8-1/8"	8-3/8"	
K-150-4	1-1/2"	10-1/8"	10-3/8"	

### ACCESSORY OPTIONS




**Material:** 304 stainless steel.  
**Finish:** #3 satin polish where visible.

Continuous run of active and/or inactive sections. Center tees extended to end of plenum to appear continuous. Ceiling tee bars by others or option 12 frame required.

Qty.	Model	Length L	Height H	Options	Tag

To maintain KEES' policy of continuous product development, we reserve the right to change prices, specifications, ratings and dimensions without notice or obligation.

<b>Project</b>			<b>Location</b>		
<b>Engineer</b>			<b>Dwg. No.</b>	<b>Diff. KS-SS</b>	 <b>KEES INCORPORATED</b> 400 S. Industrial Dr. Elkhart Lake, WI 53020 Phone: (920) 876-3391 Fax: (920) 876-3065 Website: www.kees.com
<b>Architect</b>			<b>Date</b>	01/13	
<b>Contractor</b>					