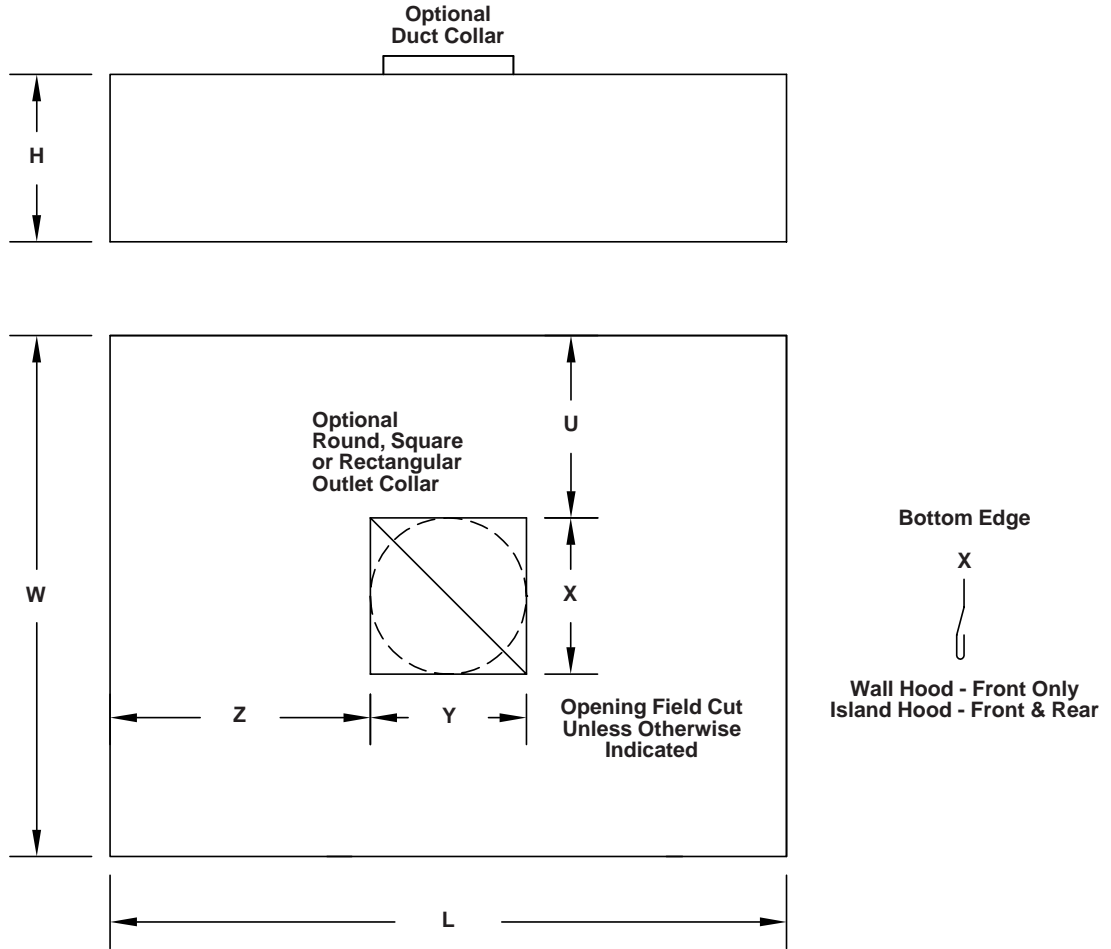


# MODEL KG - Heat Only Hood

(See reverse side for Model KG - Moisture Hood)



Quantity	Wall or Island	① Material	② Material Gauge	Hood Dimensions		
				L	W	H

③ Factory Cut Opening				Options	Tag
U	X	Y	Z		

- ① Stainless (standard); Aluminum (optional)
- ② 18 ga. is standard; other gauges available.

- ③ Includes 1 inch high collar welded on.



To maintain KEES' policy of continuous product improvement, we reserve the right to change prices, specifications, ratings or dimensions without notice or obligation.

<b>Project</b>		<b>Location</b>	
<b>Engineer</b>			
<b>Architect</b>		<b>Dwg. No.</b>	<b>SD-KG-H</b>
<b>Contractor</b>		<b>Date</b>	<b>06/06</b>

**KEES INCORPORATED**  
 400 S. Industrial Dr. • P.O. Box L  
 Elkhart Lake, WI 53020  
 Phone: (920) 876-3391  
 Fax: (920) 876-3065  
 Website: www.kees.com