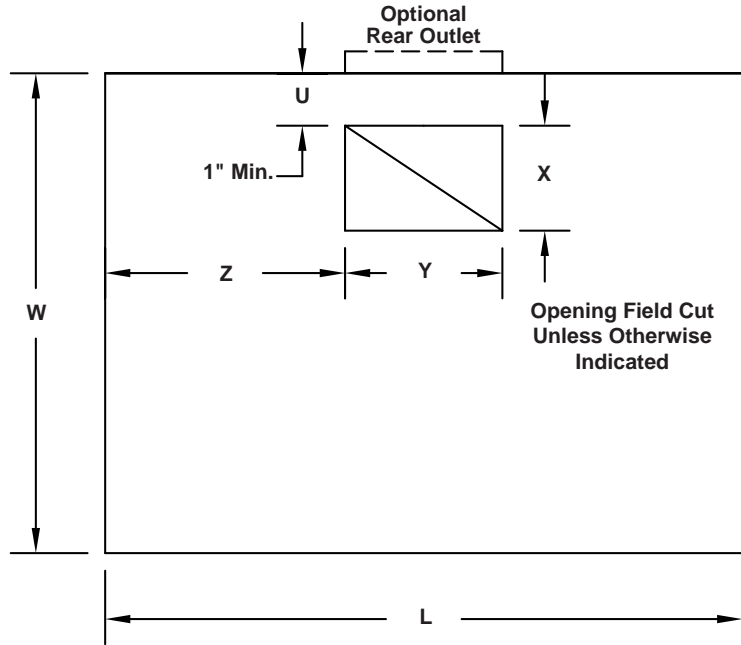
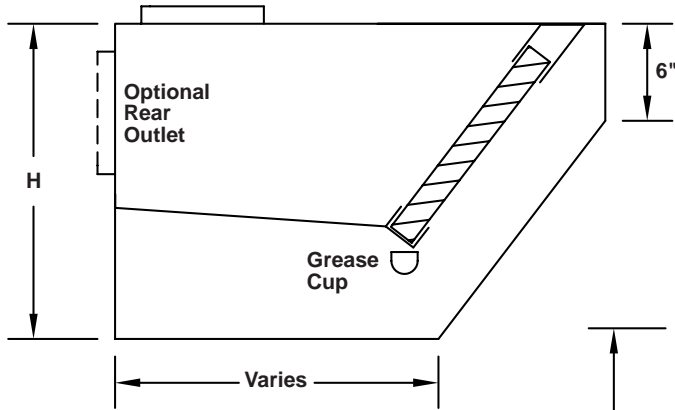


# MODEL KE



Type of Bottom Edge on All Sides



| Quantity | ① Material | ② Material Gauge | Hood Dimensions |   |   | ③ Factory Cut Opening |   |   |   |
|----------|------------|------------------|-----------------|---|---|-----------------------|---|---|---|
|          |            |                  | L               | W | H | U                     | X | Y | Z |
|          |            |                  |                 |   |   |                       |   |   |   |
|          |            |                  |                 |   |   |                       |   |   |   |
|          |            |                  |                 |   |   |                       |   |   |   |
|          |            |                  |                 |   |   |                       |   |   |   |


| ④ Filters |          |          |      | ⑤ Finish | Other Options | Tag |
|-----------|----------|----------|------|----------|---------------|-----|
| Type      | Material | Quantity | Size |          |               |     |
|           |          |          |      |          |               |     |
|           |          |          |      |          |               |     |
|           |          |          |      |          |               |     |
|           |          |          |      |          |               |     |

- ① Type 304 stainless steel.
- ② 18 ga. is standard; other gauges available.
- ③ Includes 1 inch high collar welded on.
- ④ Aluminum baffle type U.L. Classified filters standard.

- ⑤ #3 polish standard.
- ⑥ Optional switch package with flush mounted stainless steel cover and junction box on top of hood. (Fan switch with illuminated toggle).
  - Hood mounted       Loose for wall mounting
  - Number of fan switches \_\_\_\_\_ Voltage \_\_\_\_\_ 115V \_\_\_\_\_ 24V



To maintain KEES' policy of continuous product improvement, we reserve the right to change prices, specifications, ratings or dimensions without notice or obligation.

|                   |  |                 |              |  |
|-------------------|--|-----------------|--------------|--|
| <b>Project</b>    |  | <b>Location</b> |              |  <b>KEES INCORPORATED</b><br>400 S. Industrial Dr. • P.O. Box L<br>Elkhart Lake, WI 53020<br>Phone: (920) 876-3391<br>Fax: (920) 876-3065<br>Website: www.kees.com |
| <b>Engineer</b>   |  | <b>Dwg. No.</b> | <b>SD-KE</b> |  |
| <b>Architect</b>  |  | <b>Date</b>     | <b>08/09</b> |  |
| <b>Contractor</b> |  |                 |              |  |