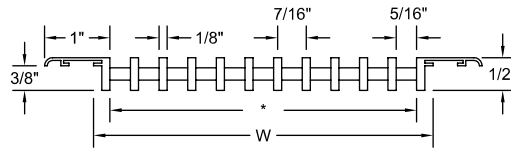




Architectural Wall/ Sill Bar Grilles

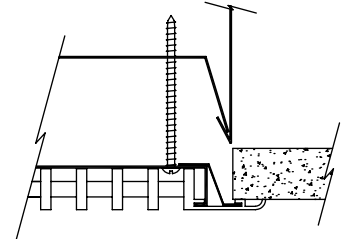
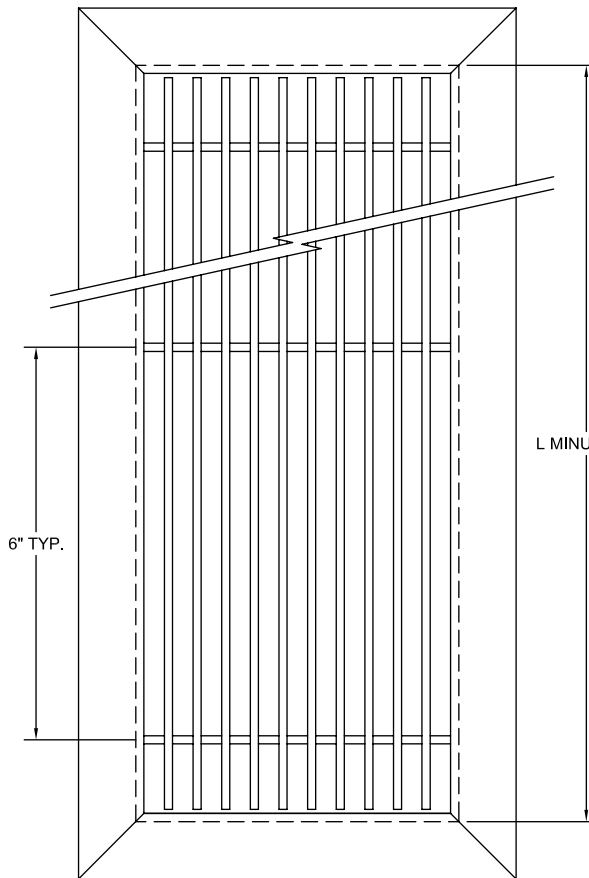
ABG-050 1/2" Deep Bar Grille



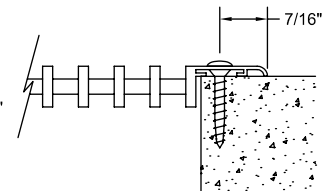
Duct Width	Number of Bars *	
	With Frame	Core Only
1-1/2"	2	4
2"	3	5
2-1/2"	4	6
3"	5	7
3-1/2"	6	8
4"	7	9
5"	10	12
6"	12	14
8"	16	18
10"	21	23
12"	25	27

* Available core widths limited to integral bar quantities and outside bar spacing shown.

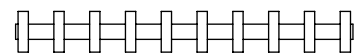
- All aluminum construction with 18-8 stainless steel fasteners
- 1/8" wide fixed position bars
- 7/16" centerline bar spacing
- Minimum duct width is 1-1/2"
- Maximum length per section is 96"
- Painted finish available in matte silver or white. Also available in mill finish. Contact factory for other special colors and finishes.



MOUNTING OPTION X
DUCT BRACKETS



MOUNTING OPTION A
#8 SCREWS WITH
COUNTERSUNK HOLES



CORE ONLY OPTION
FRAME STYLE CO

FM FRAME

Qty.	Listed Size		Frame Style	Mounting Option	Finish	Tag
	L	W				

To maintain KEES' policy of continuous product improvement, we reserve the right to change prices, specifications, ratings or dimensions without notice or obligation.

Project				Location		
Engineer				Dwg. No. SD-ABG-050		KEES INCORPORATED 400 S. Industrial Dr. • P.O. Box L Elkhart Lake, WI 53020 Phone: (920) 876-3391 Fax: (920) 876-3065 Website: www.kees.com
Architect						
Contractor						