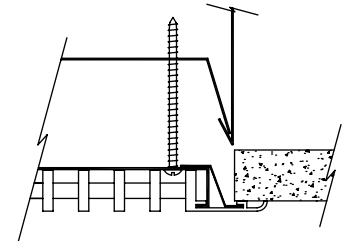
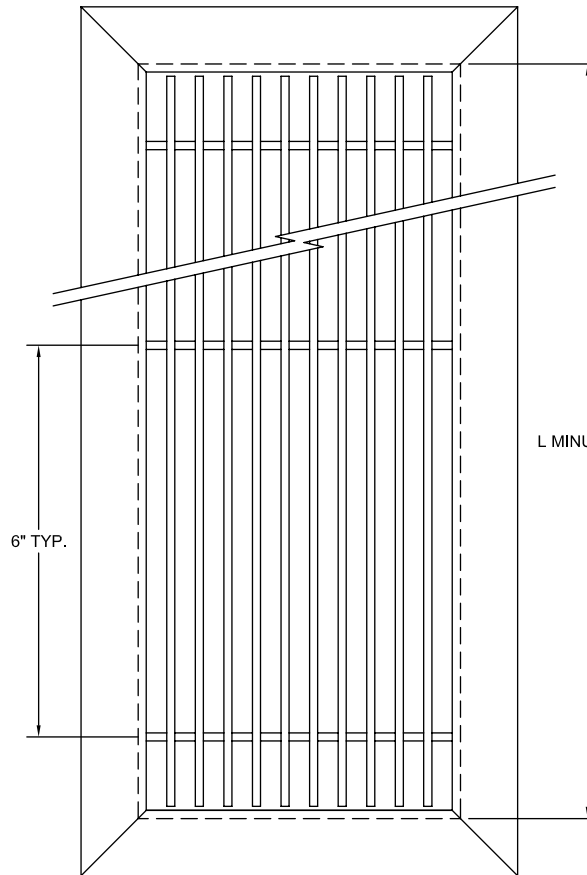
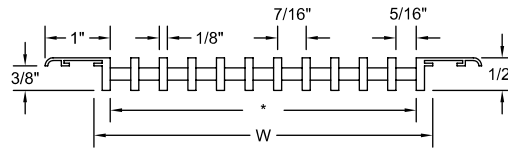




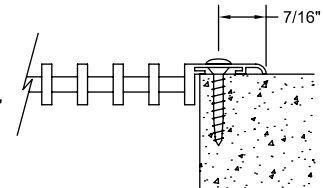
ARCHITECTURAL WALL / SILL BAR GRILLES

ABG-050 1/2" Deep Bar Grille

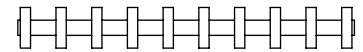
Duct Width	Number of Bars *	
	With Frame	Core Only
0.75		2
1	1	3
1.5	2	4
2	3	5
2.5	4	6
3	5	7
3.5	6	8
4	7	9
4.5	8	10
4.75	9	11
5	10	12
5.5	11	13
6	12	14
6.5	13	15
7	14	16
7.5	15	17
8	16	18
8.25	17	19
8.5	18	20
9	19	21
9.5	20	22
10	21	23
10.5	22	24
11	23	25
11.5	24	26
11.75	25	27
12	26	28



MOUNTING OPTION X
DUCT BRACKETS



MOUNTING OPTION A
#8 SCREWS WITH
COUNTERSUNK HOLES



CORE ONLY OPTION
FRAME STYLE CO

* Available core widths limited to integral bar quantities and outside bar spacing shown.

- All aluminum construction with 18-8 stainless steel fasteners.
- 1/8" wide fixed position bars.
- 7/16" centerline bar spacing.
- Minimum duct width is 1" (FM Frame) or 3/4" (core only).
- Maximum length per section is 96".
- Painted finish available in matte silver, white, satin black or dark bronze. Also available in mill finish. Contact factory for other special colors and finishes.

FM FRAME

Qty.	Listed Size		Frame Style	Mounting Option	Finish	Tag
	L	W				

To maintain KEES' policy of continuous product development, we reserve the right to change prices, specifications, ratings and dimensions without notice or obligation.

Project				Location		
Engineer				Dwg. No.	SD-ABG-050	KEES INCORPORATED 400 S. Industrial Dr. Elkhart Lake, WI 53020 Phone: (920) 876-3391 Fax: (920) 876-3065 Website: www.kees.com
Architect				Date	05/12	
Contractor						